



FOND DU LAC SCHOOL DISTRICT

FACILITIES REFERENDUM

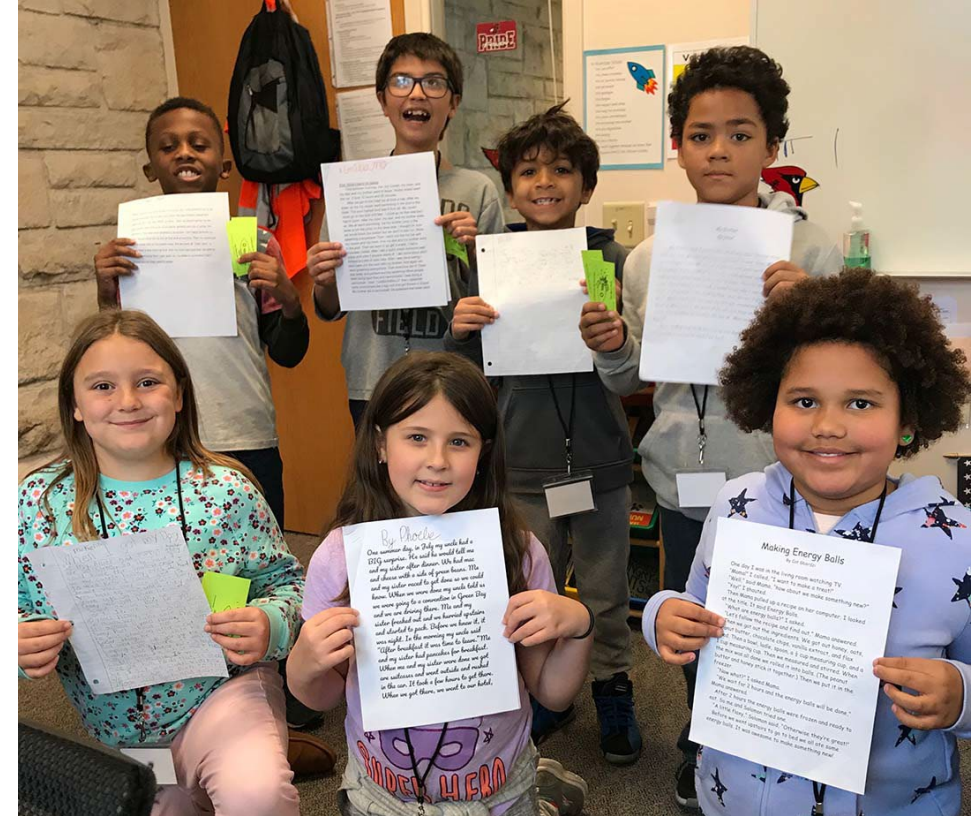
PLEASE VOTE APRIL 2ND



FOND DU LAC SCHOOL DISTRICT

» Thanks to great staff and strong partnerships with our families and the community, our students continue to experience success both in and out of the classroom. A few examples include:

- The District has “Exceeded Expectations” on the State Report Card in two of the last three school years.
- Chegwin Elementary has been named a “Title I School of Recognition” for 14 consecutive years.
- The High School Jazz Band took 1st Place at the 2018 Mundelein Jazz Festival.



FOND DU LAC SCHOOL DISTRICT

- This past fall, our football team ended the nation's longest high school football winning streak of a conference competitor.
- *Sister Act*, the High School's 2017-18 musical, was honored by the Fox Cities Performing Arts Center.
- The District is completing an expansion of the Architecture, Construction & Engineering (ACE) Academy, funded in part by area business partners.



BACKGROUND

- » While we are very proud of our successes, we know there are challenges ahead, including developing a plan to update our schools to ensure our educational spaces meet the needs of our students.
- » The Board of Education believes this is a good time to consider our options, because in 2019 the District will make the final loan payment associated with the high school building project, and interest rates continue to be low.
- » These events will reduce the tax impact of any new investment.



BACKGROUND

- » Upon review of the identified needs and associated costs, the District sent out a community-wide survey this past fall.
- » The goal of the survey was to gather the community's feedback and input on the future of our schools, and help guide the District's and Board's next steps in improving our facilities.



COMMUNITY SURVEY

- » Conducted in October 2018 by School Perceptions
- » 2,186 total responses
- » 68% of all resident respondents stated they would advise the District to pursue a referendum to update our schools
- » Respondents rated their support for all components of the plan as “very likely” or “somewhat likely”
- » 65% of all resident respondents stated they would support a referendum of \$90 million; 57% stated they would support a referendum totaling \$105 million



BOARD ADOPTION

- » Upon review of the District-wide needs identified in a facilities study and feedback received from the community survey, the Board of Education has decided to place two referendum questions, totaling \$98.5 million, on the April 2 ballot.
- » The Board believes the questions being presented to voters reflect both the priorities of the taxpayers and meet the needs of our students.



QUESTION #1 | As it will Appear on the Ballot

Shall the Fond du Lac School District, Fond du Lac County, Wisconsin be authorized to issue pursuant to Chapter 67 of the Wisconsin Statutes, general obligation bonds in an amount **not to exceed \$91,500,000** for the public purpose of paying the cost of a district-wide school improvement project consisting of: building systems, capital maintenance and building exterior improvements at district facilities; safety and security updates at district schools, including upgraded secure main entrances; classroom and support area improvements and Americans with Disabilities Act (ADA) updates at certain district schools; site improvements; and acquisition of related furnishings, fixtures and equipment?

☐ YES ☐ NO



QUESTION #2 | As it will Appear on the Ballot

Shall the Fond du Lac School District, Fond du Lac County, Wisconsin be authorized to issue pursuant to Chapter 67 of the Wisconsin Statutes, general obligation bonds in an amount **not to exceed \$7,000,000** for the public purpose of paying the cost of a capital improvement project consisting of adding air conditioning to certain district facilities?

☐ YES ☐ NO





THE NEED + SOLUTION

THE NEED | Question #1

The District serves approximately 7,200 students and maintains over 1.52 million square feet in:

- » Nine elementary schools (built from 1950-1975)
- » Three middle schools (built from 1962-1971)
- » Fond du Lac High School (built in 2001)
- » Two STEM charter schools (built in 1908)
- » An alternative high school – Fondy Central (built in 1956)



THE SOLUTION | Question #1

While we have done our best to maintain these schools, a significant investment is needed to address the following:



Improve Safety and Security

> *Redesign School Entrances and Interior Spaces*



Address Building Exteriors

> *Replace Roofs, Windows, and Doors*



Update Building Systems

> *HVAC, Electrical, and Plumbing*



THE SOLUTION | Question #1

SCHOOL	SAFETY/ SECURITY UPGRADES	BUILDING SYSTEMS AND INFRASTRUCTURE UPGRADES									
		Plumbing	HVAC			Electrical					
		Replace Plumbing Fixtures	Update Boilers/ Heating System	Update Unit Vents	Upgrade to Digital Controls	New Generator	New Electrical Service	Replace Panels	Partial Lighting Replacement	New Intercom System	New Fire Alarm System
Chegwin	●	●	●	●	●			●	●	●	●
Evans	●	●		●	●		●	●	●	●	●
Franklin/STEM	●	●	●	●	●				●	●	
Lakeshore	●	●	●	●	●	●		●	●	●	●
Parkside	●	●	●	●	●	●		●	●	●	
Pier	●	●		●	●	●		●	●	●	●
Riverside	●	●	●	●	●				●	●	●
Roberts	●	●	●	●	●			●	●	●	●
Rosenow	●							●	●	●	
Waters	●	●	●	●	●			●	●	●	●
Sabish	●	●	●	●	●			●	●	●	
Theisen	●	●	●	●	●			●	●	●	●
Woodworth	●	●	●	●	●			●	●	●	●
High School	●		●								

Note: The scope of proposed building infrastructure improvements included above is not an all inclusive list of the proposed upgrades, but intended to provide an easily consumable summary.

THE SOLUTION | Question #1

SCHOOL	ADA UPGRADES	BUILDING SYSTEMS AND INFRASTRUCTURE UPGRADES					EXTERIOR IMPROVEMENTS				SITE IMPROVEMENTS	
		Interior Improvements										
		Repair/ Replace Interior Walls	Replace Interior Doors	Partial Flooring Replacement	Partial Ceiling Replacement	Partial Asbestos Abatement	Replace Exterior Doors	Replace Windows	Roof Replacement	Building Tuckpointing/ Maintenance	Asphalt Repair/ Replacement	Site Concrete Repair/ Replacement
Chegwin	●		●	●	●	●	●	●			●	
Evans	●		●	●	●	●	●	●	●		●	●
Franklin/STEM	●			●	●		●	●		●	●	
Lakeshore	●	●	●	●	●	●	●			●	●	
Parkside	●	●	●	●	●	●				●	●	●
Pier	●	●	●	●	●	●	●		●	●	●	●
Riverside	●	●	●		●	●	●	●	●	●	●	●
Roberts	●	●	●	●	●	●		●	●	●	●	
Rosenow	●					●			●	●	●	●
Waters	●	●	●	●	●	●	●	●	●	●	●	●
Sabish	●	●	●	●	●	●	●	●	●	●	●	●
Theisen	●	●	●	●	●	●	●	●	●	●	●	●
Woodworth	●	●	●	●	●	●		●	●	●	●	●
High School		●		●					●		●	

Note: The scope of proposed building infrastructure improvements included above is not an all inclusive list of the proposed upgrades, but intended to provide an easily consumable summary.

THE NEED + SOLUTION | Question #2

This question focuses on adding air conditioning to eight schools, which would then enable each school in the District to provide students with climate-controlled learning environments. Question #2 will only be completed if Question #1 is approved.

Schools that would receive air conditioning include:

- » Franklin/STEM
- » Pier Elementary School
- » Riverside Elementary School
- » Roberts Elementary School
- » Rosenow Elementary School
- » Waters Elementary School
- » Sabish Middle School
- » Woodworth Middle School





THE INVESTMENT

OVERALL MILL RATE HISTORY



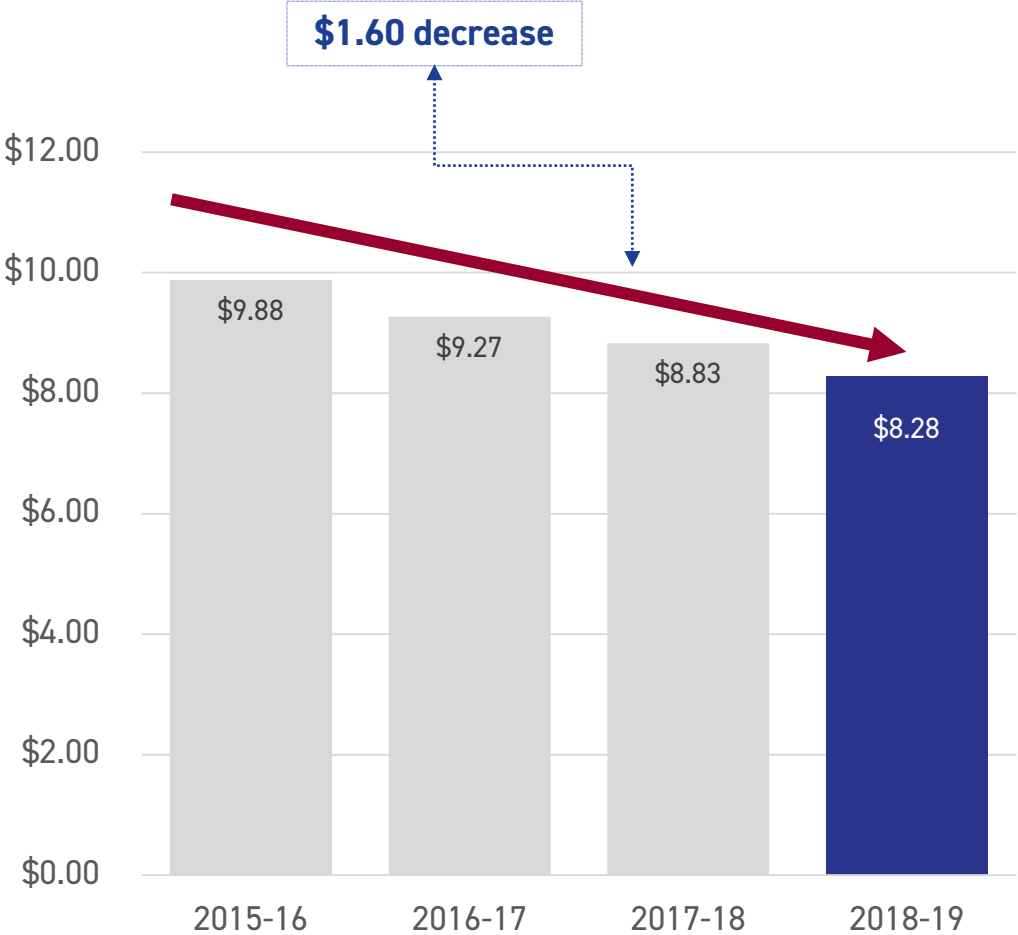
FOND DU LAC SCHOOL DISTRICT **FACILITIES REFERENDUM**

VOTE APRIL 2ND

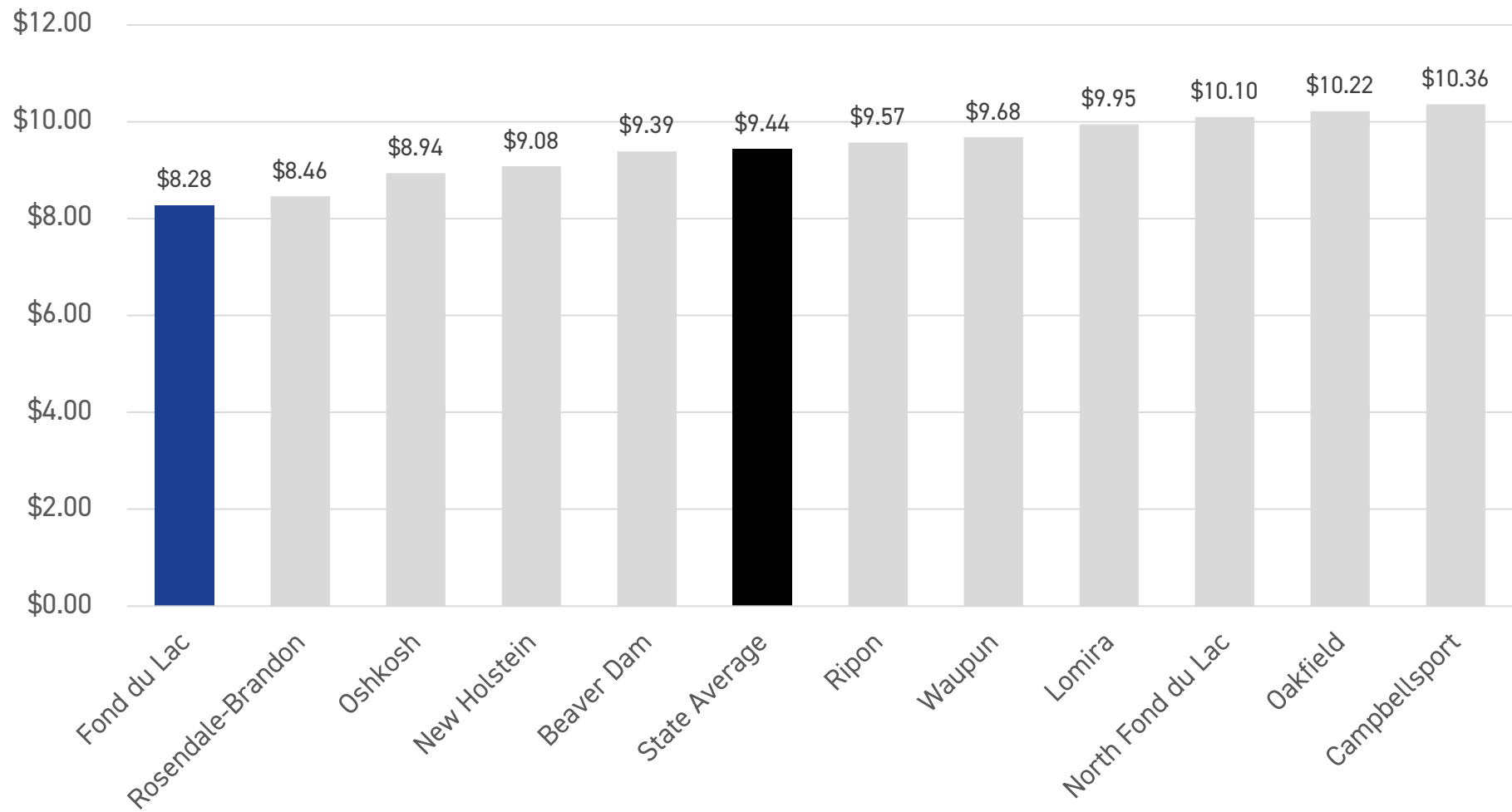
OVERALL MILL RATE HISTORY

The District has worked hard to be good stewards of taxpayer dollars and the net mill rate for debt payments has declined since 2015.

This past Fall of 2018, the Board of Education reduced the overall tax rate, including debt payments, by \$0.55 per \$1,000 or \$55.00 per \$100,000 of property value.



OVERALL MILL RATE COMPARISON | 2018-19



FOND DU LAC SCHOOL DISTRICT **FACILITIES REFERENDUM**

VOTE APRIL 2ND

THE INVESTMENT | Estimated Tax Impact

Question #1

The District is about to pay off the loans associated with the new high school and other school improvements that were approved by the March 1999 referendum. As a result, the debt portion of the school property tax bill has been steadily dropping since 2015 and the loan will be completely paid off in 2019.

The tax impact calculation for Question #1 takes into consideration the debt repayment and represents the increase over the current amount paid for referendum debt.

Question #2

The tax impact calculation for Question #2 assumes Question #1 is approved.



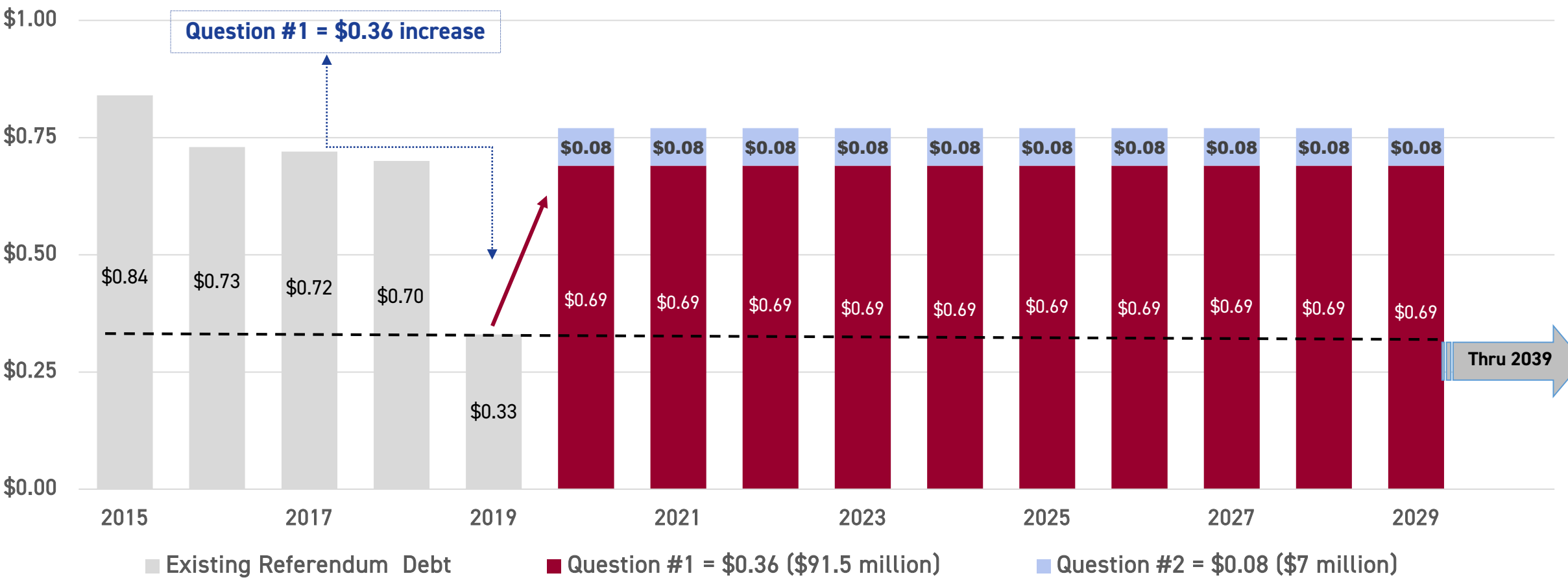
THE INVESTMENT | Estimated Tax Impact

	QUESTION #1		QUESTION #2		IF BOTH QUESTIONS ARE APPROVED	
Referendum Amount	\$91,500,000		\$7,000,000		\$98,500,000	
	\$0.36		\$0.08		\$0.44	
Fair Market Property Value	Estimated Annual	Estimated Monthly	Estimated Annual	Estimated Monthly	Estimated Annual	Estimated Monthly
\$100,000	\$36.00	\$3.00	\$8.00	\$0.67	\$44.00	\$3.67
\$150,000	\$54.00	\$4.50	\$12.00	\$1.00	\$66.00	\$5.50
\$200,000	\$72.00	\$6.00	\$16.00	\$1.33	\$88.00	\$7.33

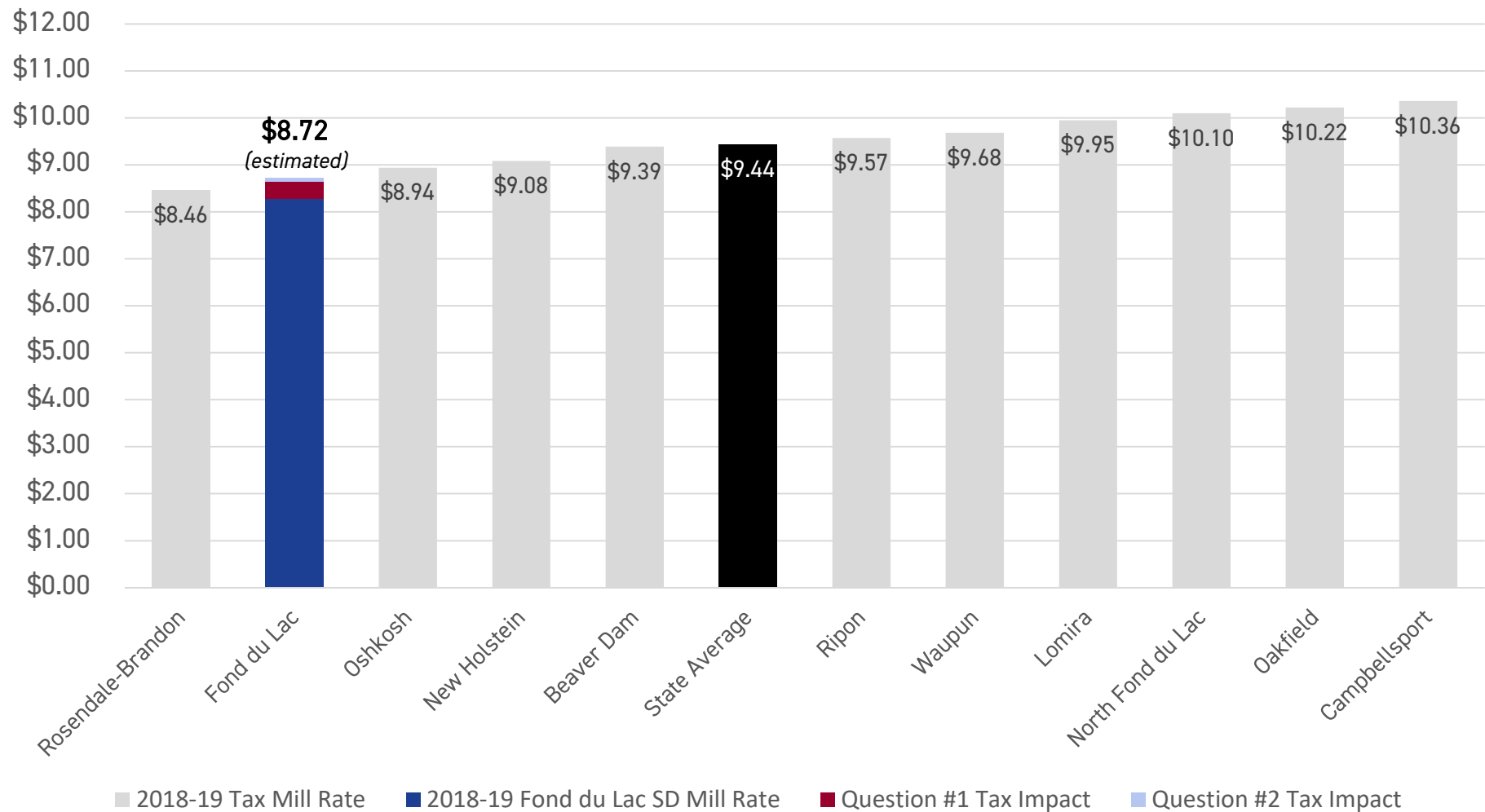
Assumptions | 2018-19 DPI Final Aid Calculation; Annual growth in Equalized Value estimated at 2.50%; Interest rate estimated at 4.00%.
Information provided by Hutchinson, Shockey, Erley & Co.



REFERENDUM MILL RATE | If Both Questions are Approved



ESTIMATED OVERALL MILL RATE COMPARISON



FOND DU LAC SCHOOL DISTRICT **FACILITIES REFERENDUM**

VOTE APRIL 2ND

FOR MORE INFORMATION



CALL

920.906.6502



EMAIL

sebertj@fonddulac.k12.wi.us



VISIT

<http://www.fonddulac.k12.wi.us/referendum2019.aspx>



ATTEND AN INFORMATIONAL MEETING

All meetings will begin at 6 PM with a brief presentation; *optional tours to follow.*

Tuesday, February 12

Rosenow Elementary School

Wednesday, February 20

Pier Elementary School

Thursday, March 7

Waters Elementary School

Wednesday, March 13

Parkside Elementary School

Tuesday, March 19

Sabish Middle School



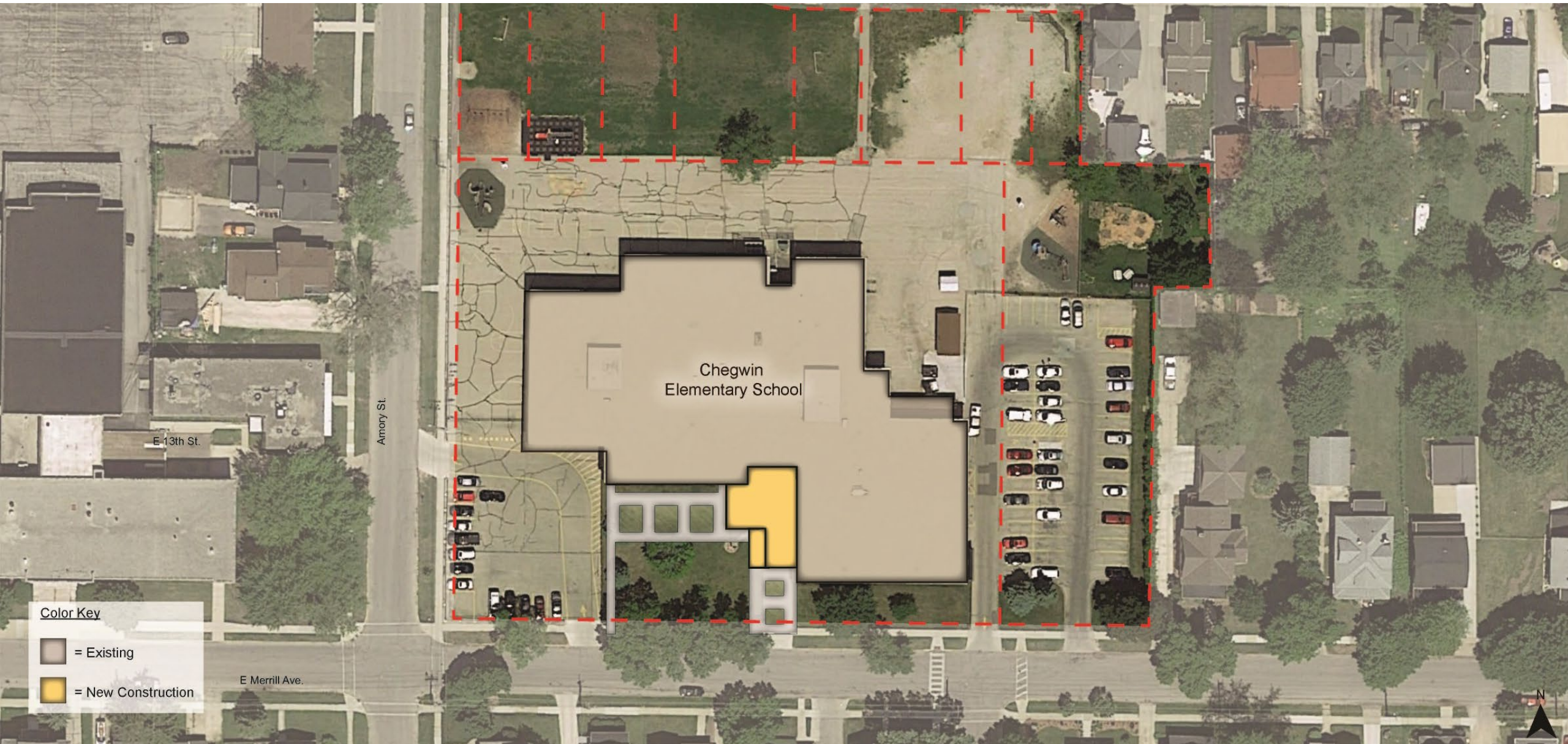
FOND DU LAC SCHOOL DISTRICT **FACILITIES REFERENDUM**

VOTE APRIL 2ND



QUESTIONS + ANSWERS

CHEGWIN ELEMENTARY | Conceptual Site Plan






CHEGWIN ELEMENTARY | Conceptual First Floor Plan



- = Existing / Infrastructure Updates
- = Renovation
- = New Construction

CHEGWIN ELEMENTARY | Conceptual Second Floor Plan



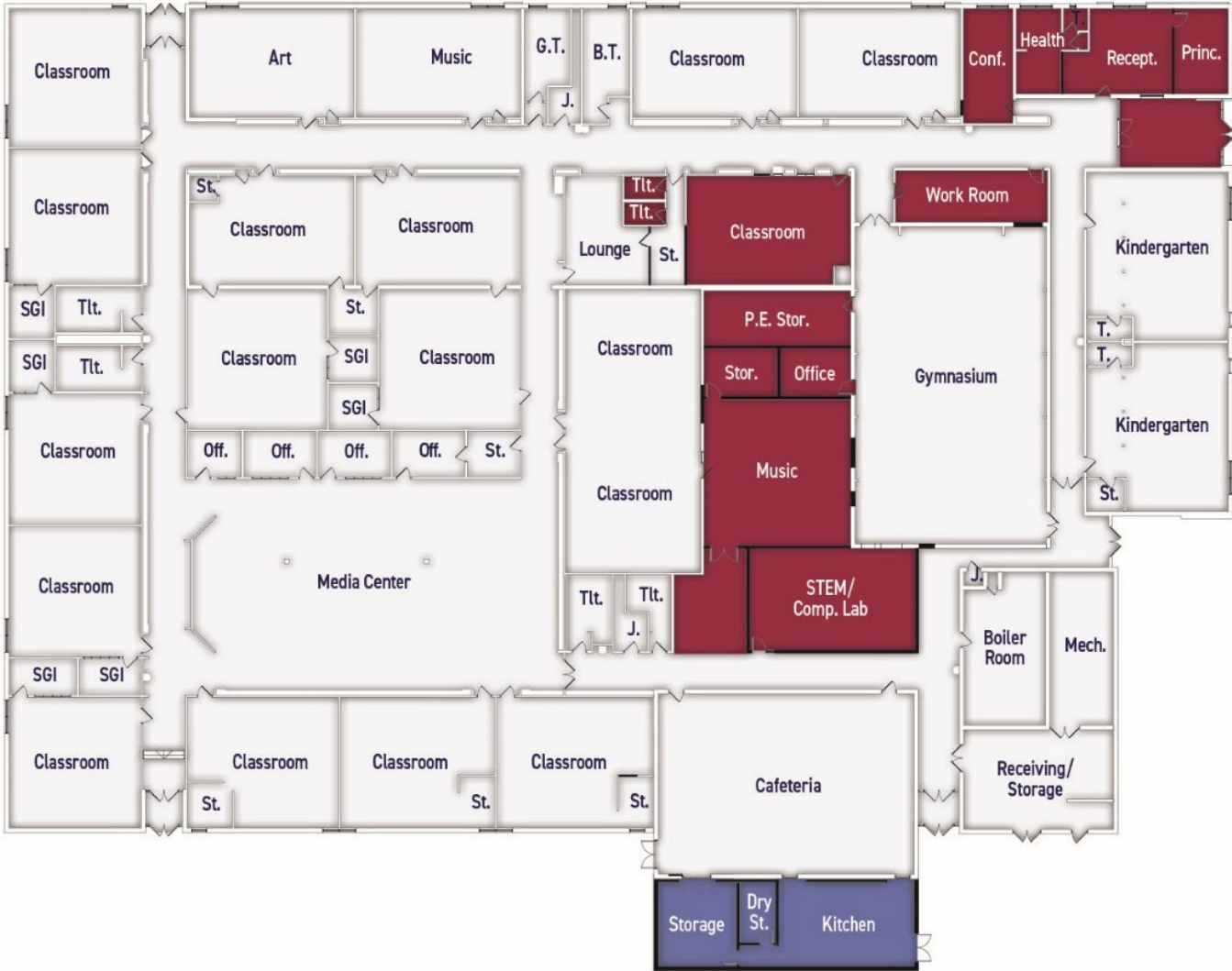
-  = Existing / Infrastructure Updates
 = Renovation
 = New Construction






EVANS ELEMENTARY | Conceptual Site Plan



EVANS ELEMENTARY | Conceptual First Floor Plan



-  = Existing / Infrastructure Updates
-  = Renovation
-  = New Construction



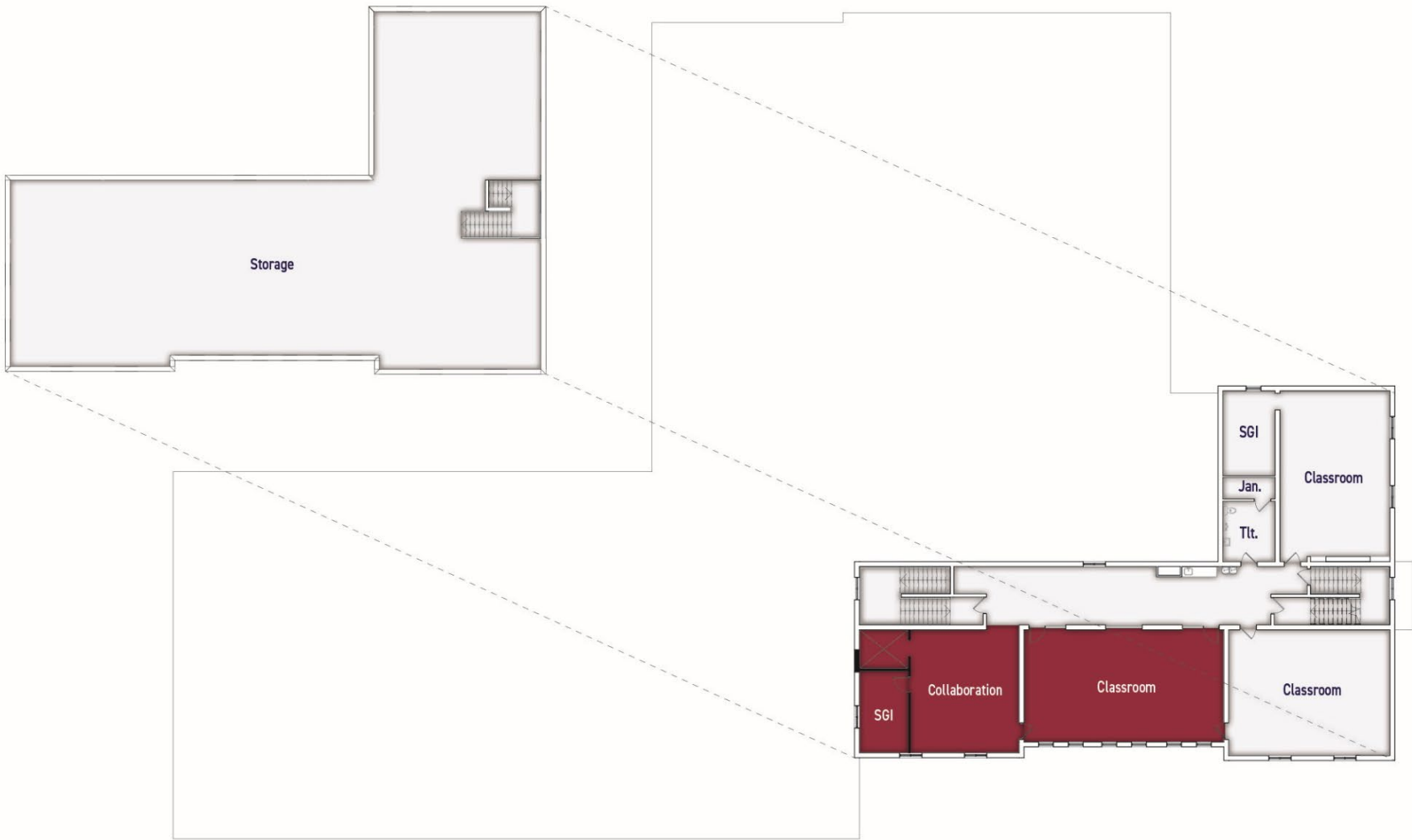
FRANKLIN / STEM SCHOOL | Site Plan



FRANKLIN / STEM SCHOOL | Conceptual Floor Plans



FRANKLIN / STEM SCHOOL | Conceptual Floor Plans



□ = Existing / Infrastructure Updates

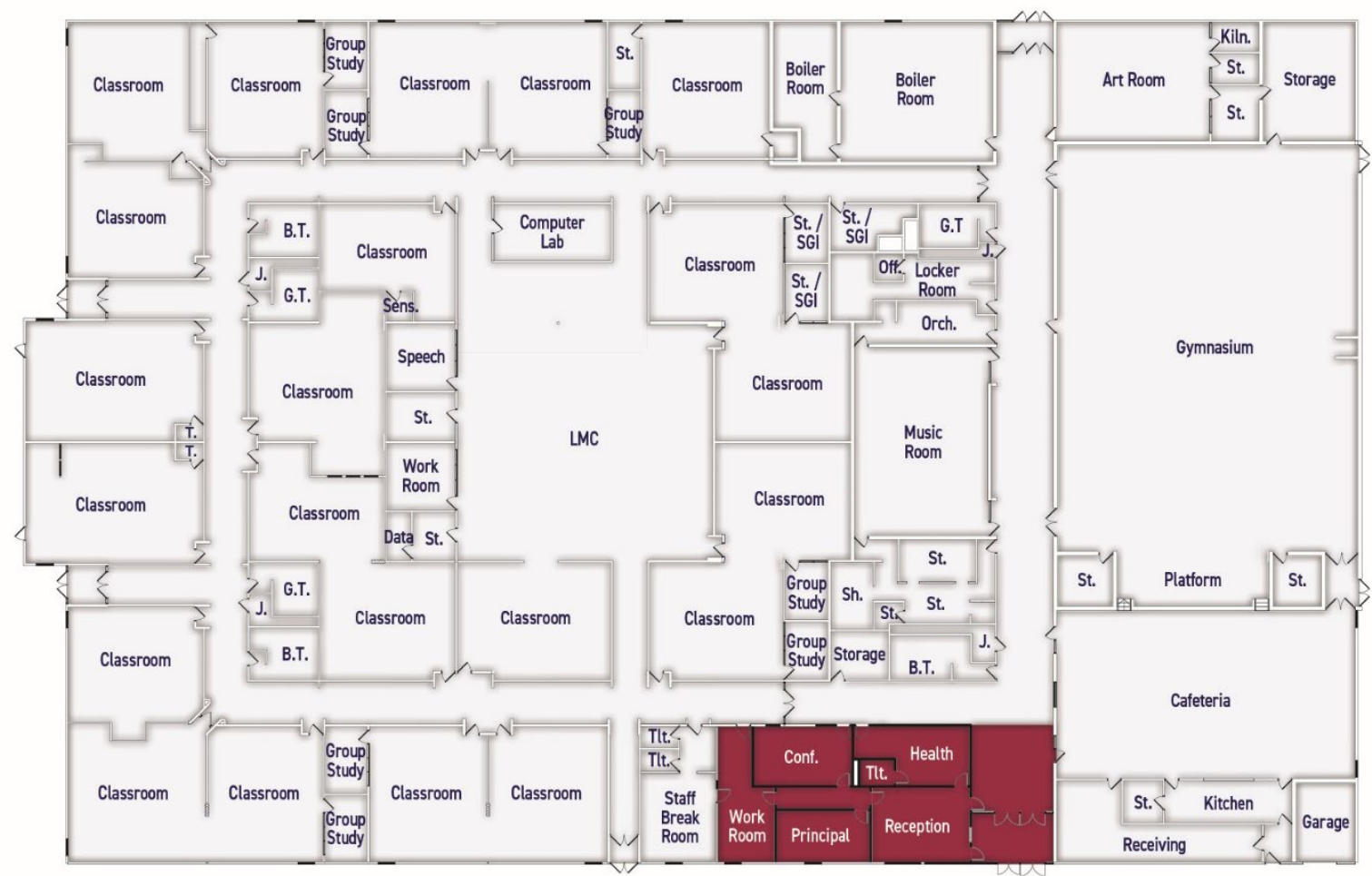
■ = Renovation



LAKESHORE ELEMENTARY | Site Plan



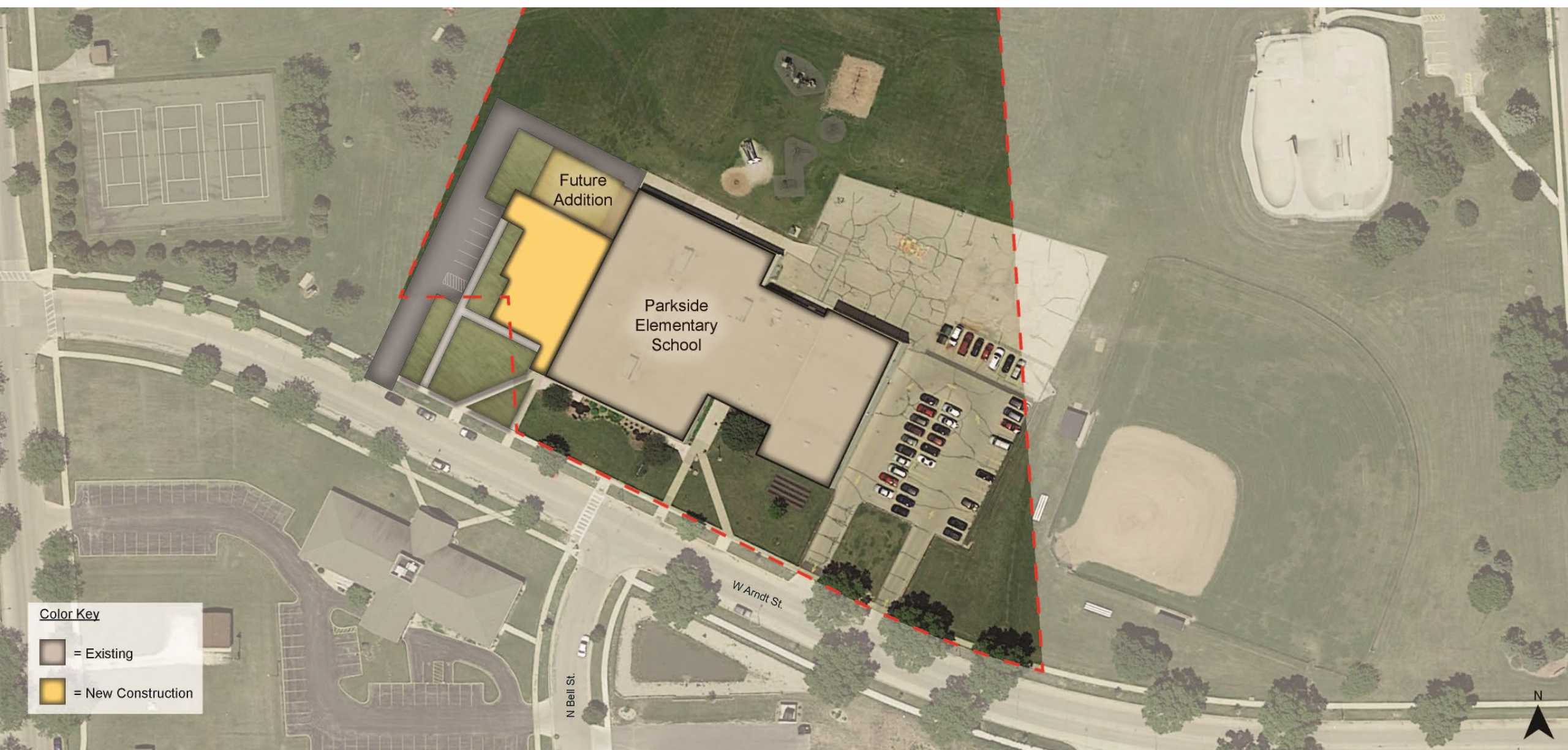
LAKESHORE ELEMENTARY | Conceptual First Floor Plan



□ = Existing / Infrastructure Updates
■ = Renovation



PARKSIDE ELEMENTARY | Conceptual Site Plan



PARKSIDE ELEMENTARY | Conceptual Floor Plans



PIER ELEMENTARY | Site Plan



PIER ELEMENTARY | Conceptual Floor Plans



□ = Existing / Infrastructure Updates

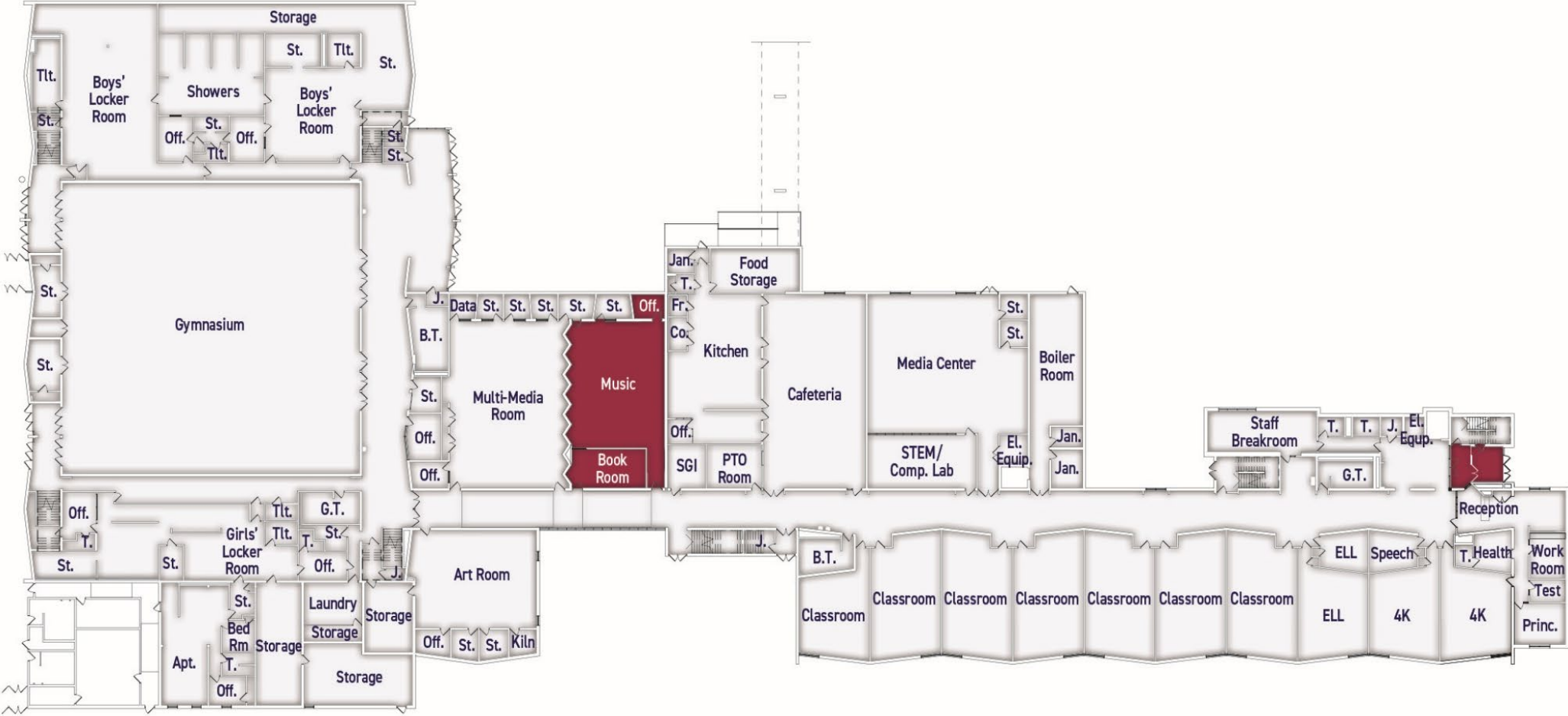
■ = Renovation



RIVERSIDE ELEMENTARY | Site Plan



RIVERSIDE ELEMENTARY | Conceptual First Floor Plan

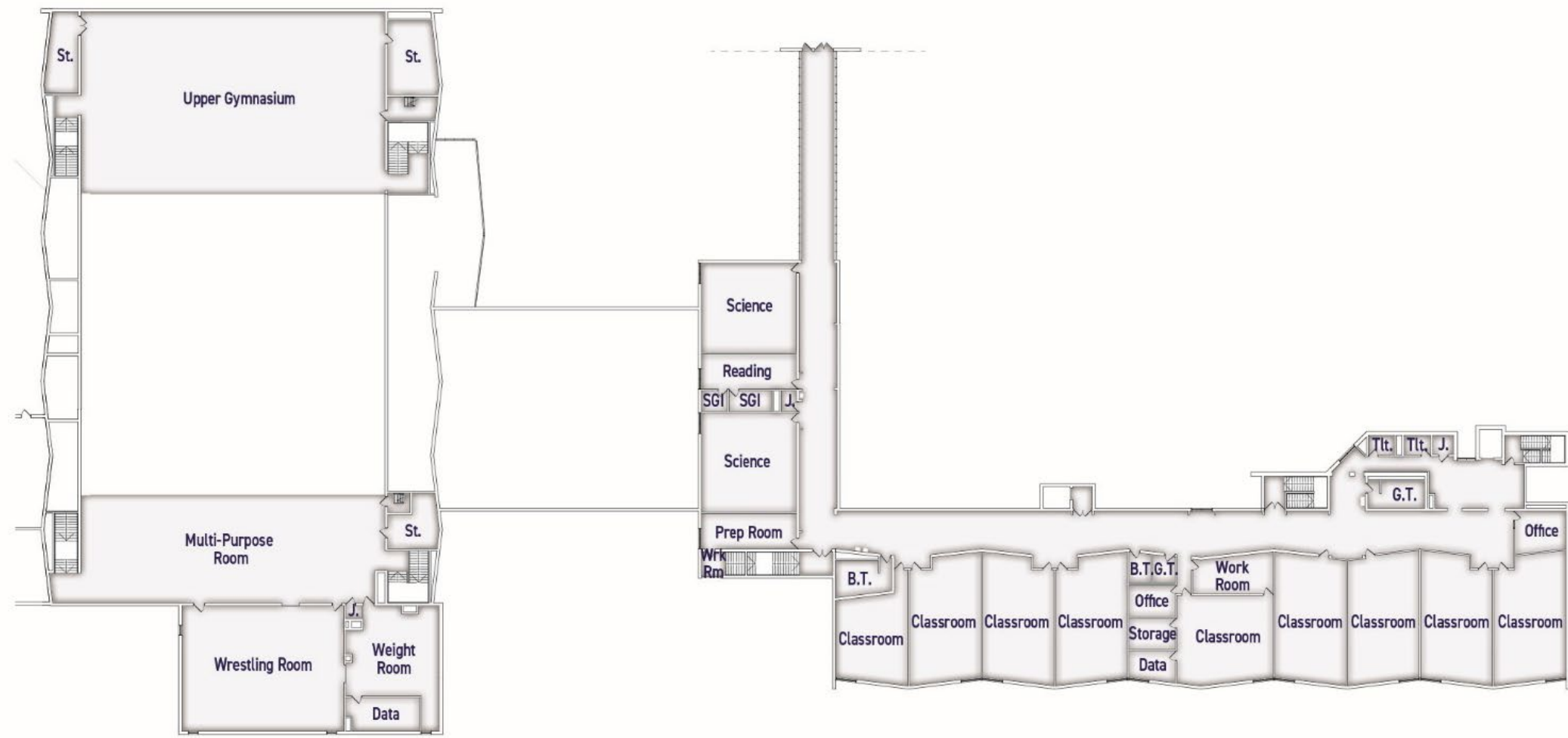


□ = Existing / Infrastructure Updates

■ = Renovation



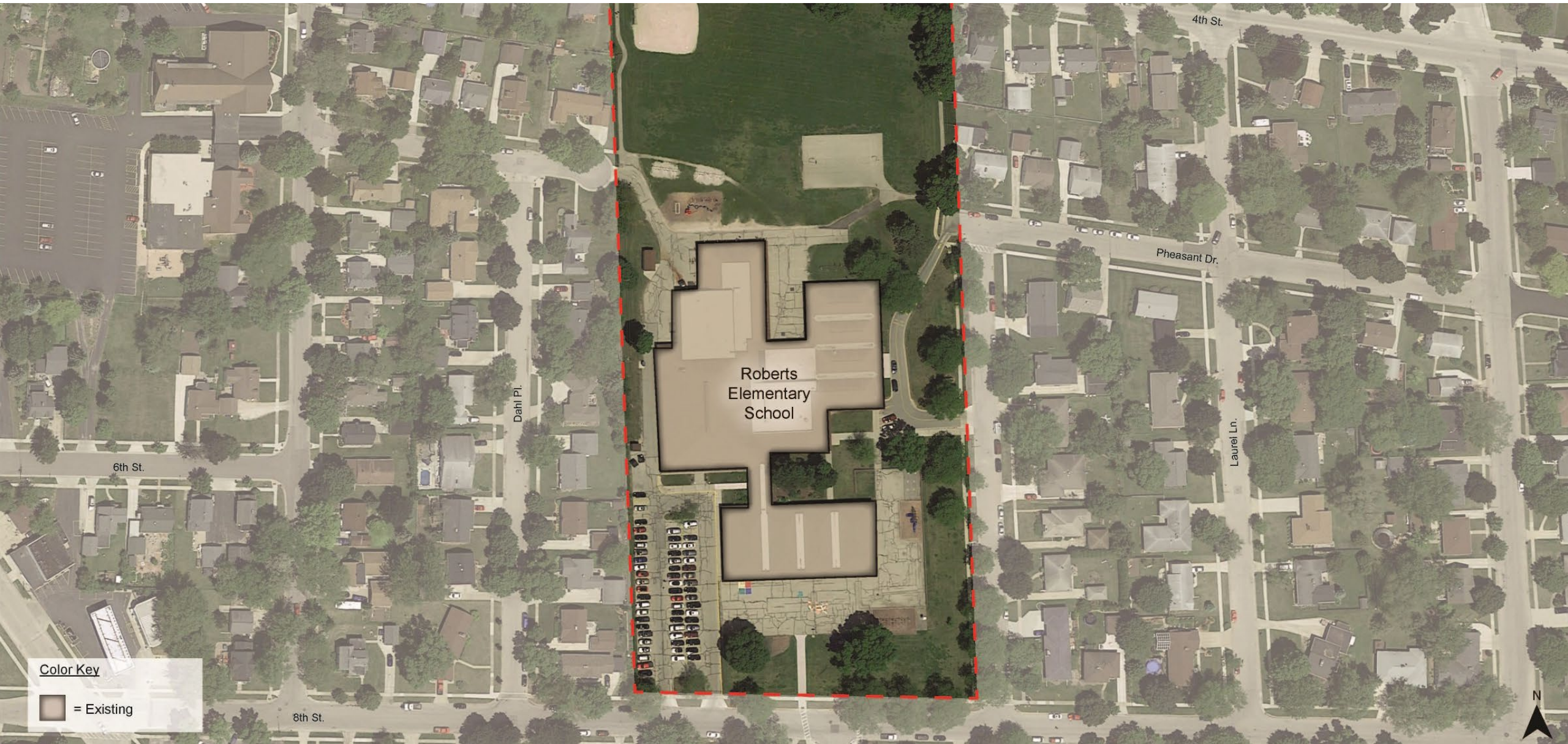
RIVERSIDE ELEMENTARY | Second Floor Plan



□ = Existing / Infrastructure Updates



ROBERTS ELEMENTARY | Site Plan



ROBERTS ELEMENTARY | Conceptual First Floor Plan

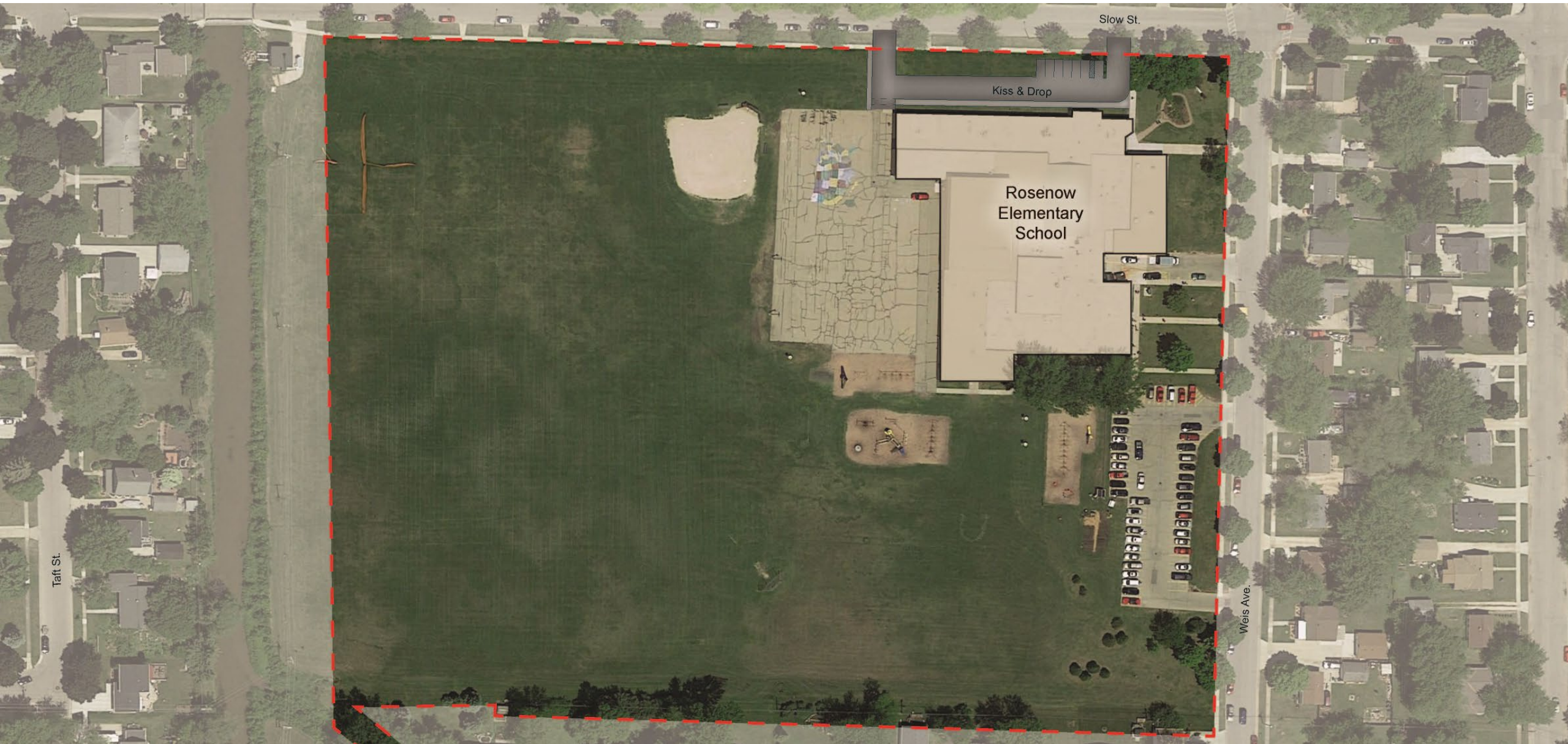


□ = Existing / Infrastructure Updates

■ = Renovation



ROSENOW ELEMENTARY | Site Plan



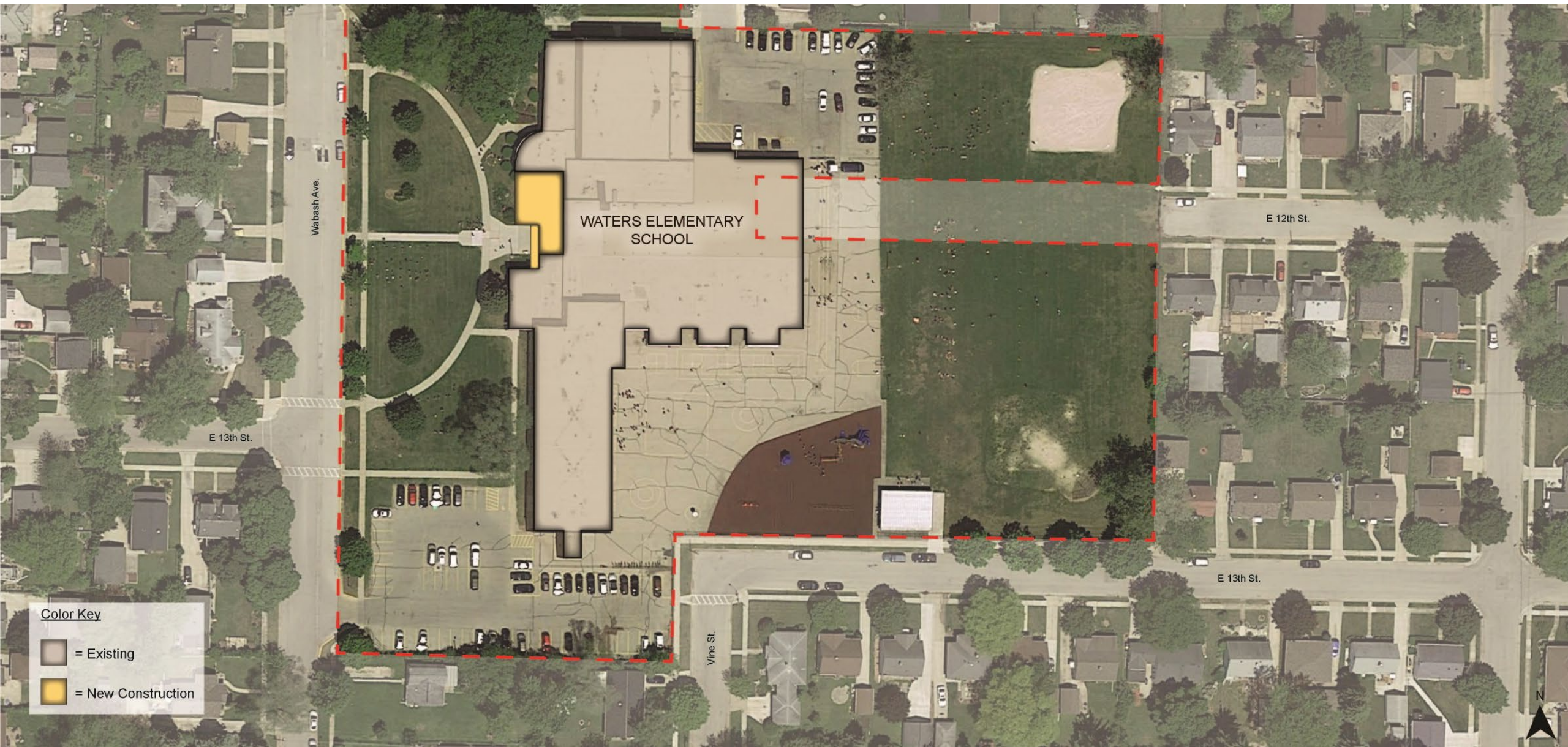
ROSENOW ELEMENTARY | First Floor Plan



 = Existing / Infrastructure Updates





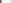
WATERS ELEMENTARY | Conceptual Site Plan



WATERS ELEMENTARY

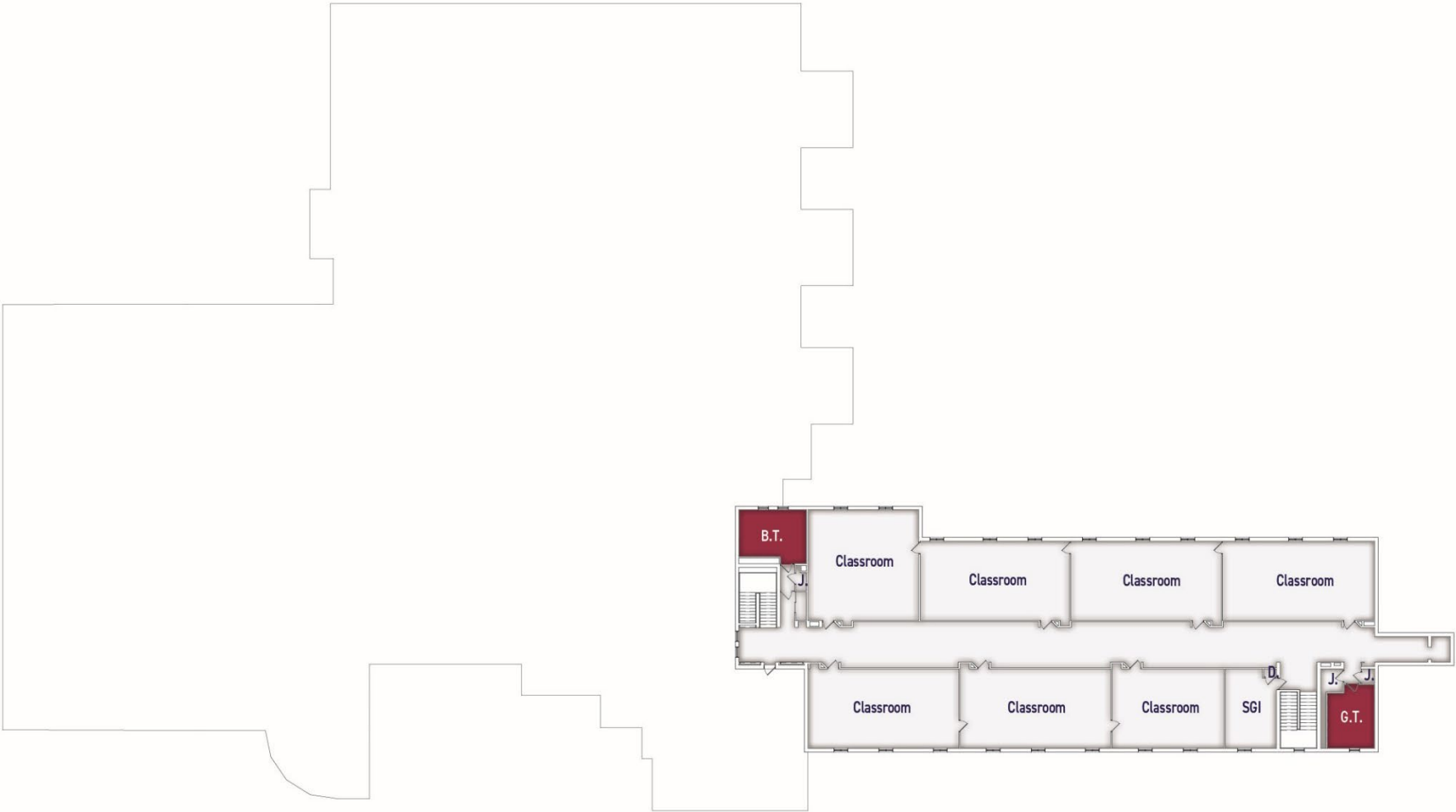
Conceptual First Floor Plan



-  = Existing / Infrastructure Updates
 = Renovation
 = New Construction



WATERS ELEMENTARY | Conceptual Second Floor Plan



□ = Existing / Infrastructure Updates

■ = Renovation



SABISH MIDDLE SCHOOL | Conceptual Site Plan



SABISH MIDDLE SCHOOL | Conceptual First Floor Plan



□ = Existing / Infrastructure Updates

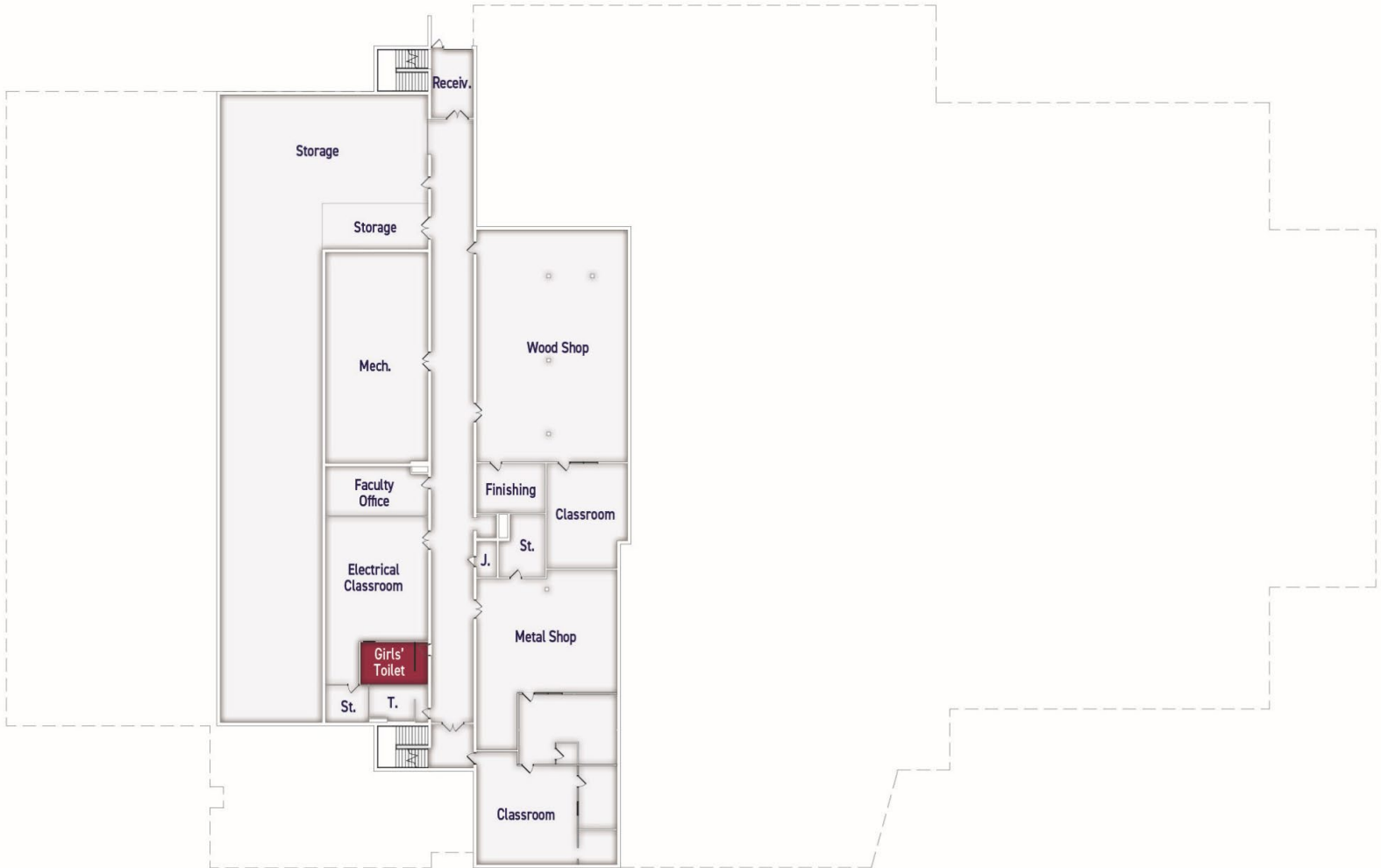
■ = Renovation



THEISEN MIDDLE SCHOOL | Conceptual Site Plan



THEISEN MIDDLE SCHOOL | Conceptual Lower Floor Plan

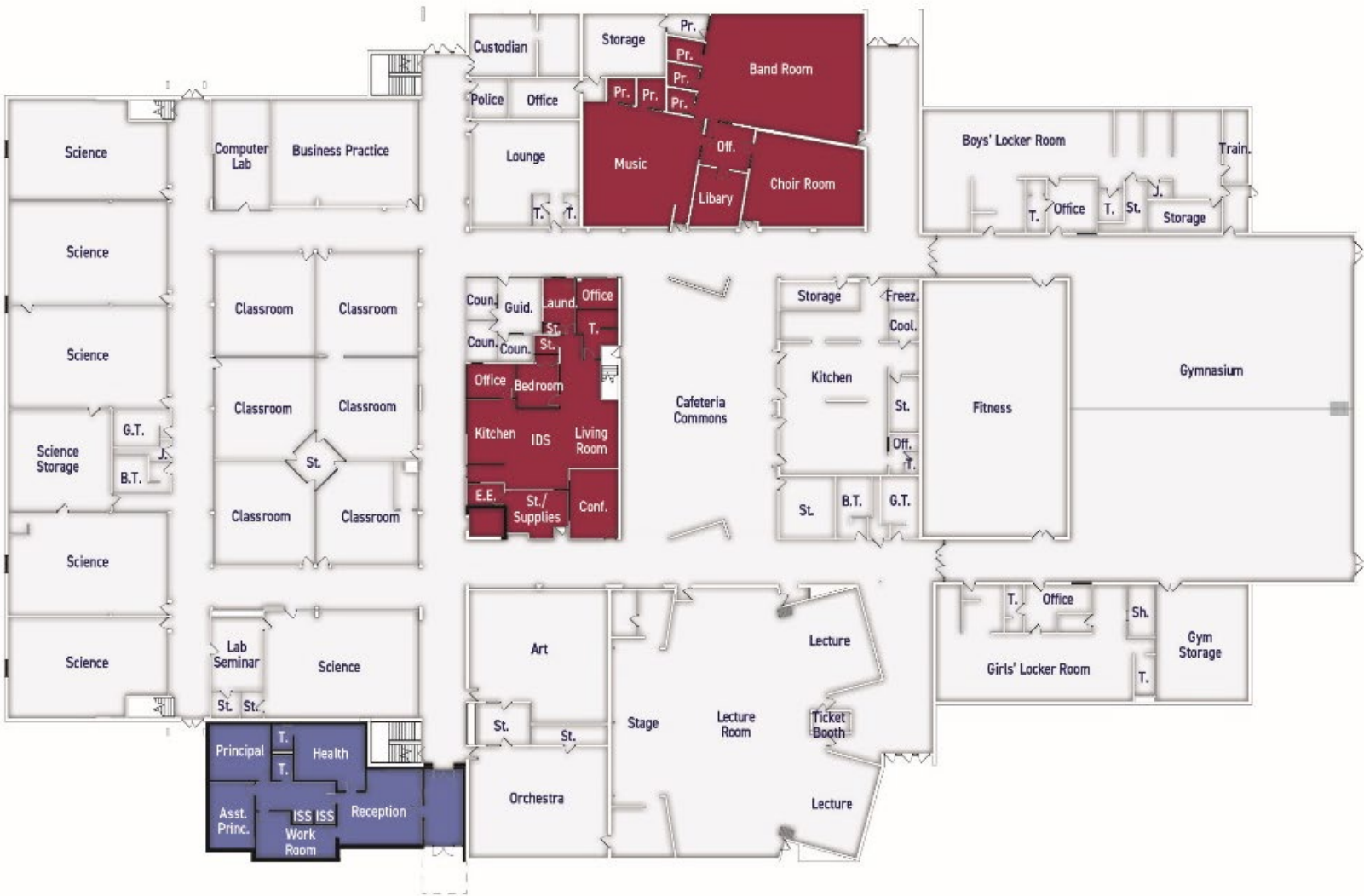





□ = Existing / Infrastructure Updates

■ = Renovation



THEISEN MIDDLE SCHOOL | Conceptual First Floor Plan



-  = Existing / Infrastructure Updates
-  = Renovation
-  = New Construction



THEISEN MIDDLE SCHOOL | Second Floor Plan



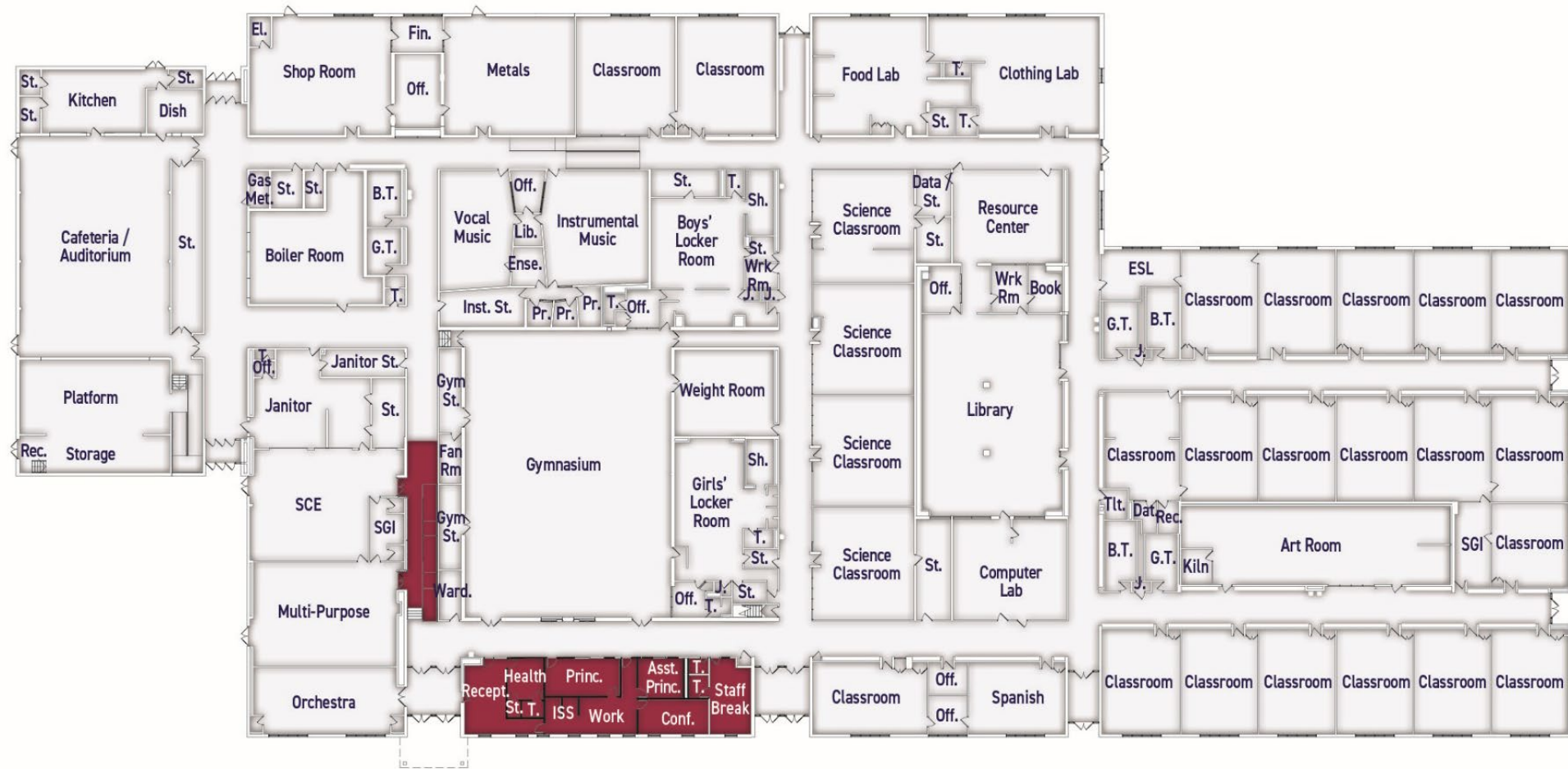
□ = Existing / Infrastructure Updates



WOODWORTH MIDDLE SCHOOL | Conceptual Site Plan



WOODWORTH MIDDLE SCHOOL | Conceptual First Floor

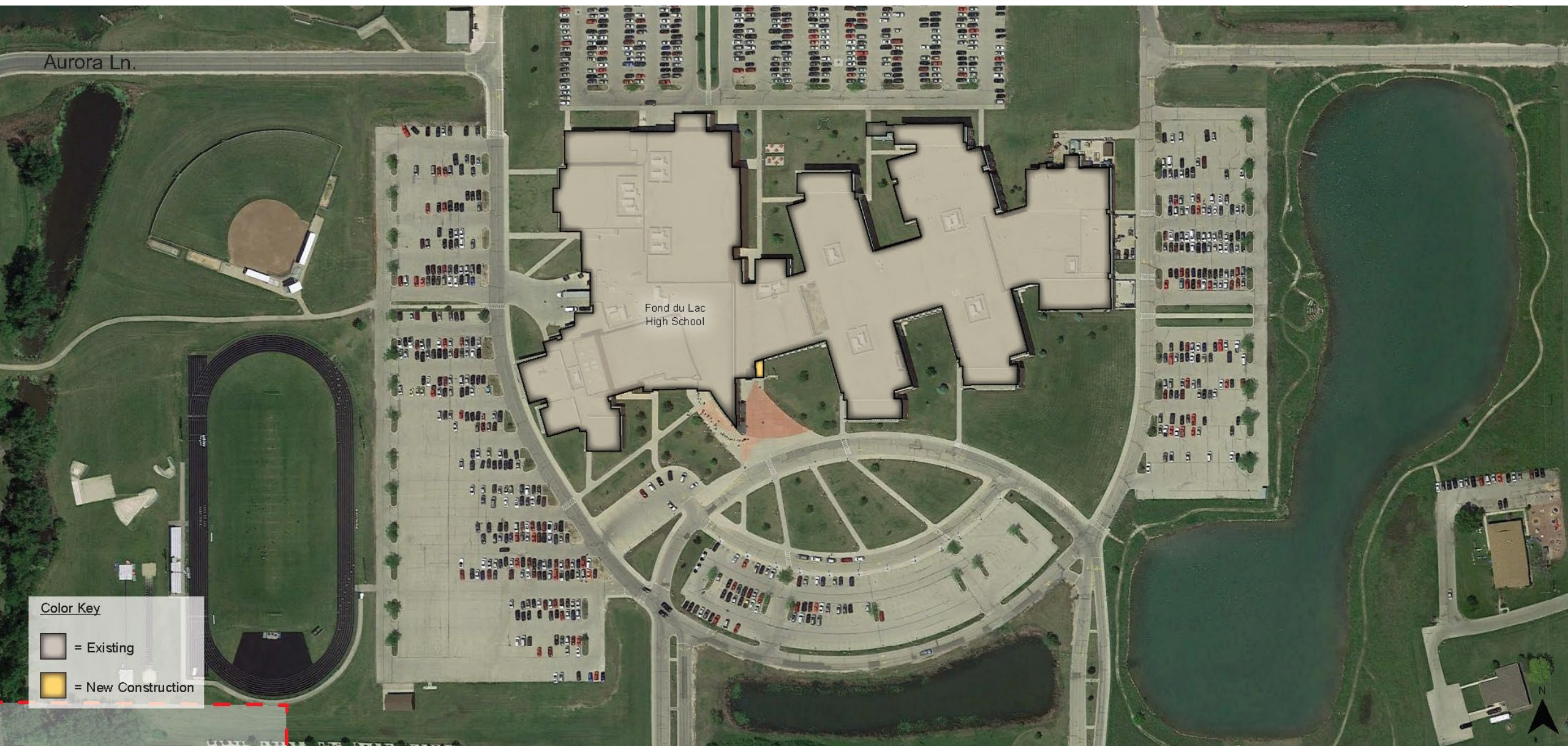


 = Existing / Infrastructure Updates

 = Renovation



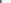


FOND DU LAC HIGH SCHOOL | Conceptual Site Plan



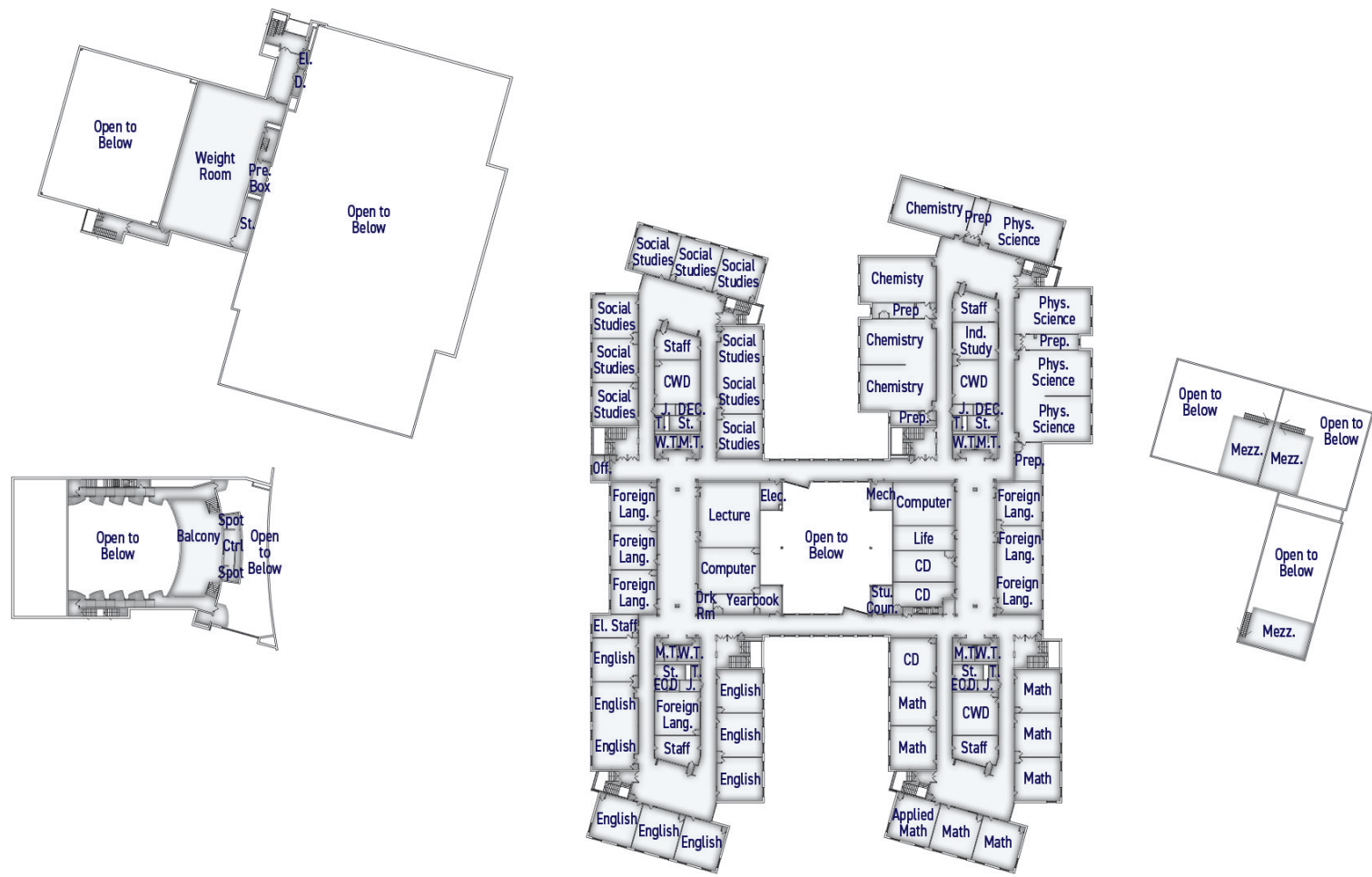
FOND DU LAC HIGH SCHOOL | Conceptual First Floor Plan



-  = Existing / Infrastructure Updates
 = Renovation
 = New Construction



FOND DU LAC HIGH SCHOOL | Second Floor Plan



□ = Existing / Infrastructure Updates

